



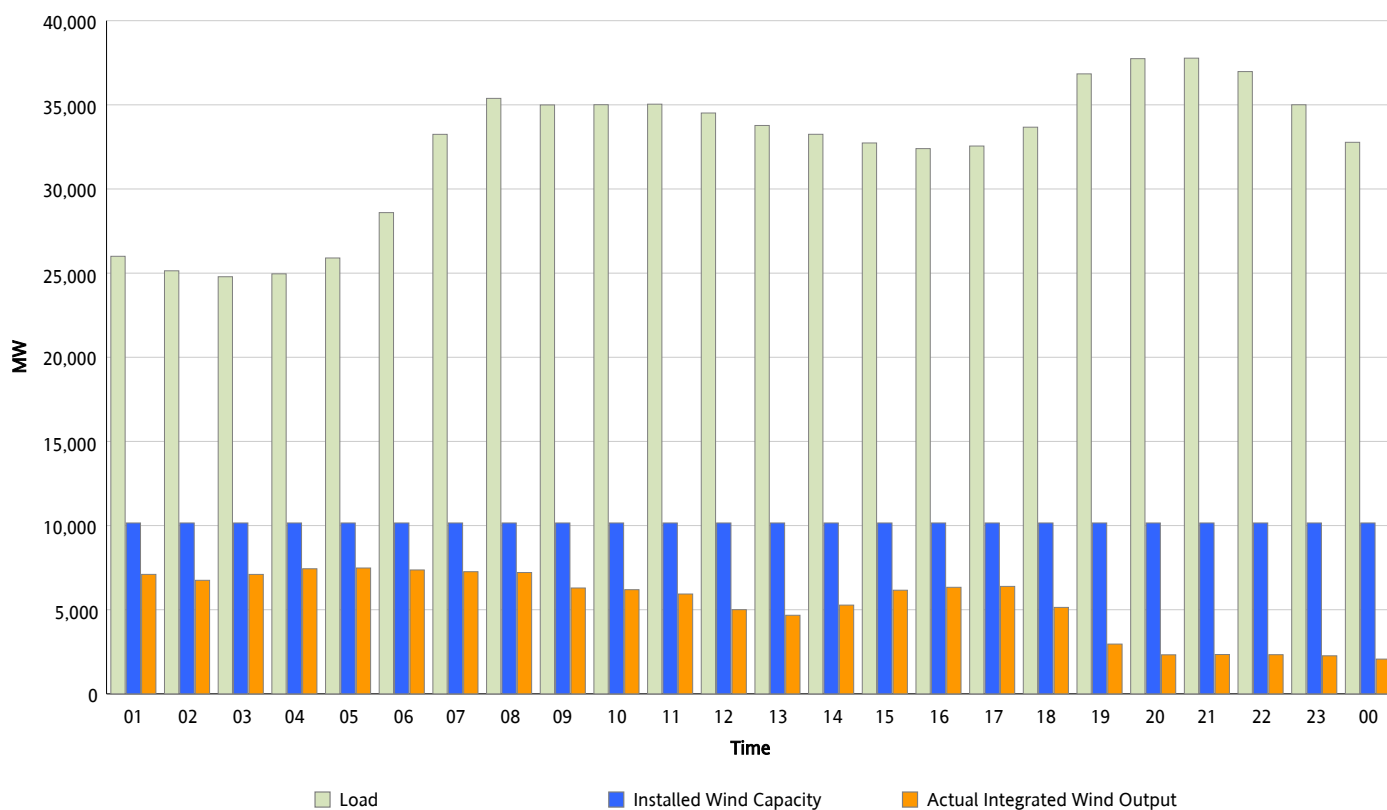
ERCOT Grid Operations

Wind Integration Report : 01/30/2013

Peak Load	37,774 MW
Load Peak Hour (HE)	21
Wind Over Peak	2,338 MW
Wind Record 01/29/13	8,667 MW
Max Wind Value*	7,628 MW
Wind Peak Time	04:13
Wind Integration %	29.78 %

Hourly Average Actual Load vs. Actual Wind Output

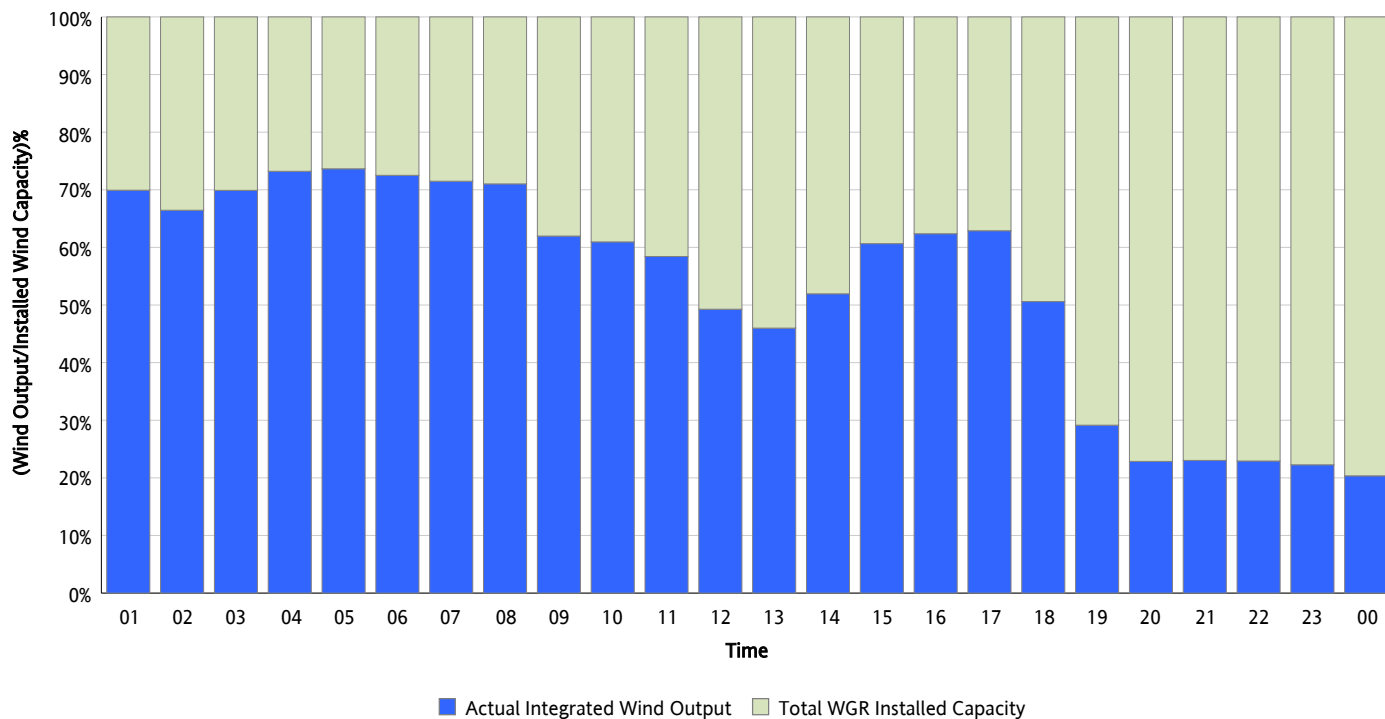
01/30/2013



* Wind Record and Wind Max represent instantaneous values and the rest of the values are integrated over the hour

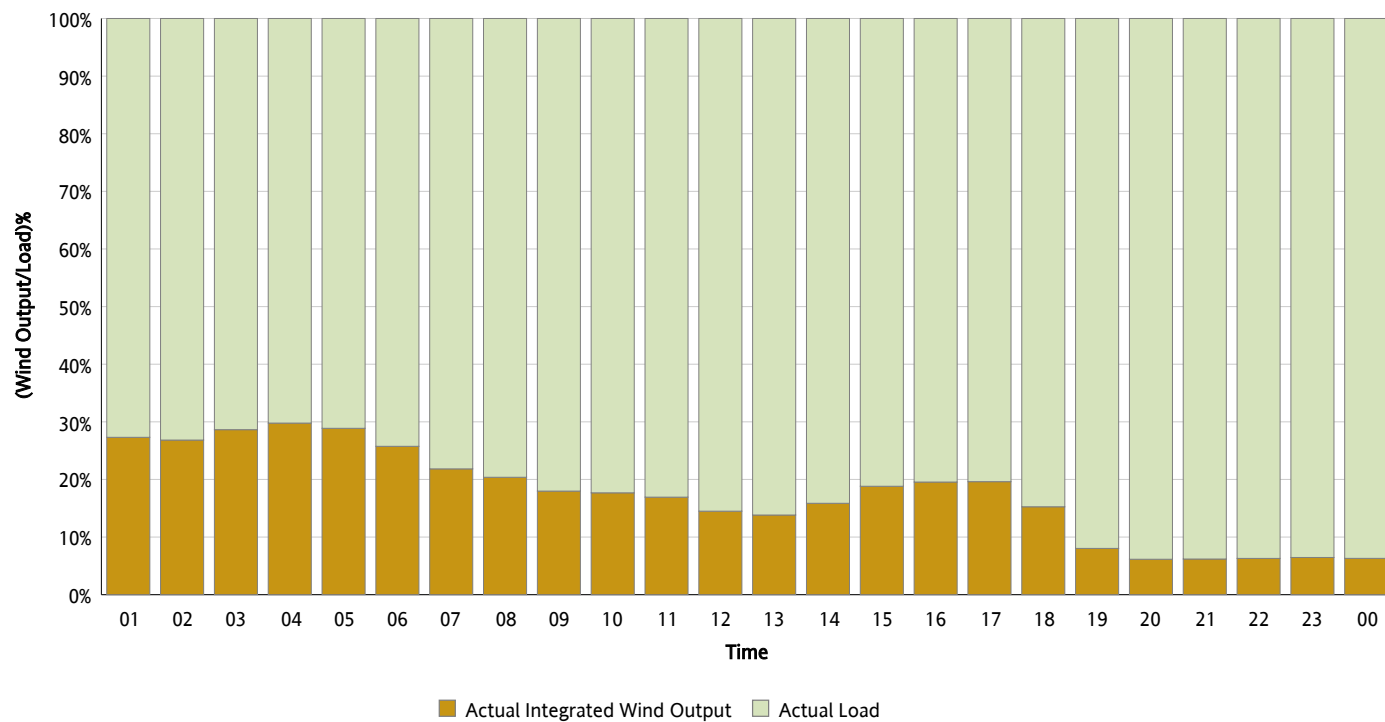
Actual Wind Output as a Percentage of the Total Installed Wind Capacity

01/30/2013



Actual Wind Output as a Percentage of the ERCOT Load

01/30/2013



ERCOT Load vs. Actual Wind Output

01/23/2013 - 01/30/2013

